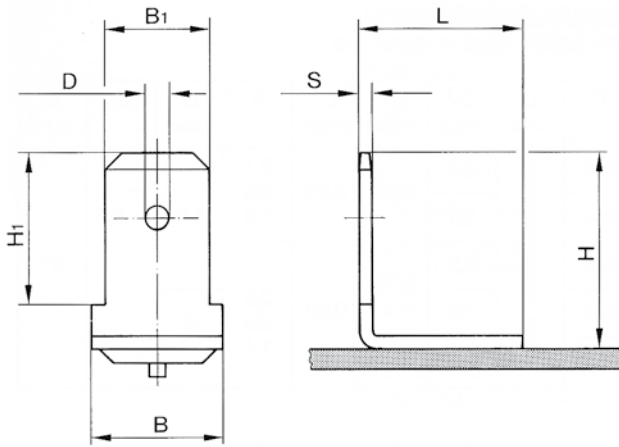


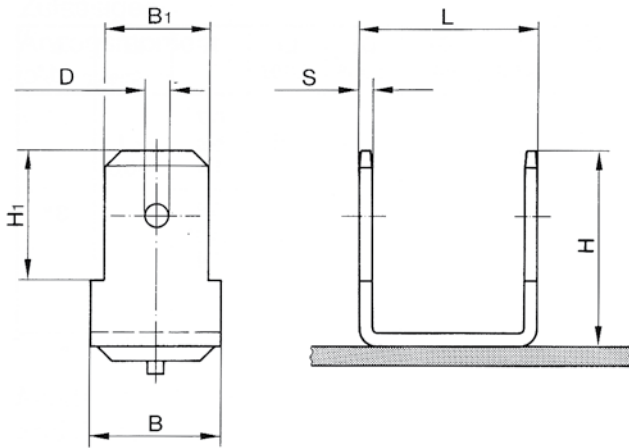
Standard Dimensions

Earth Tags and Insulation Nails



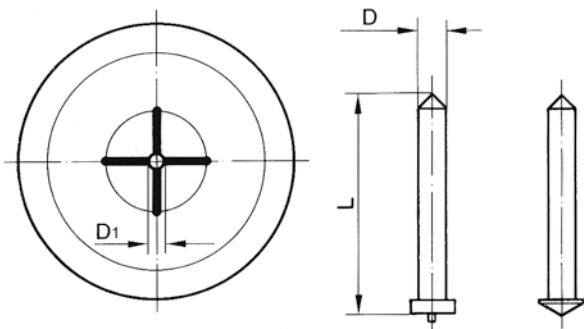
Earth tag type F1

S	H	H ₁	D	B	B ₁	L
0,8	12	8	1,5	8	6,3	10



Double earth tag type F2

S	H	H ₁	D	B	B ₁	L
0,8	12	8	1,5	8	6,3	10



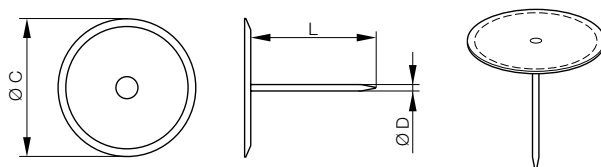
Insulation nail type with speedfix washer

Version with ignition tip type IN or conical tip type IN-K (type IN-K only for galvanized sheet metals)

D	D ₁	L
Ø2	1,8	20 - 150
Ø2,6	2,4	30 - 150
Ø3	2,8	20 - 150

Tolerances: D und D₁ ± 0.1 - L ± 1.0 mm

Cupped head pin with insulation washer



Dimensions		
L (mm)	Ø C (mm)	Ø D (mm)
19,1	30	2
25,4	30	2
28,6	30	2
38,1	30	2
47,6	30	2
54,0	30	2